

P1



ANALYSIS LTD

www.analysis-ltd.com.gr

PRESSURE TRANSMITTER



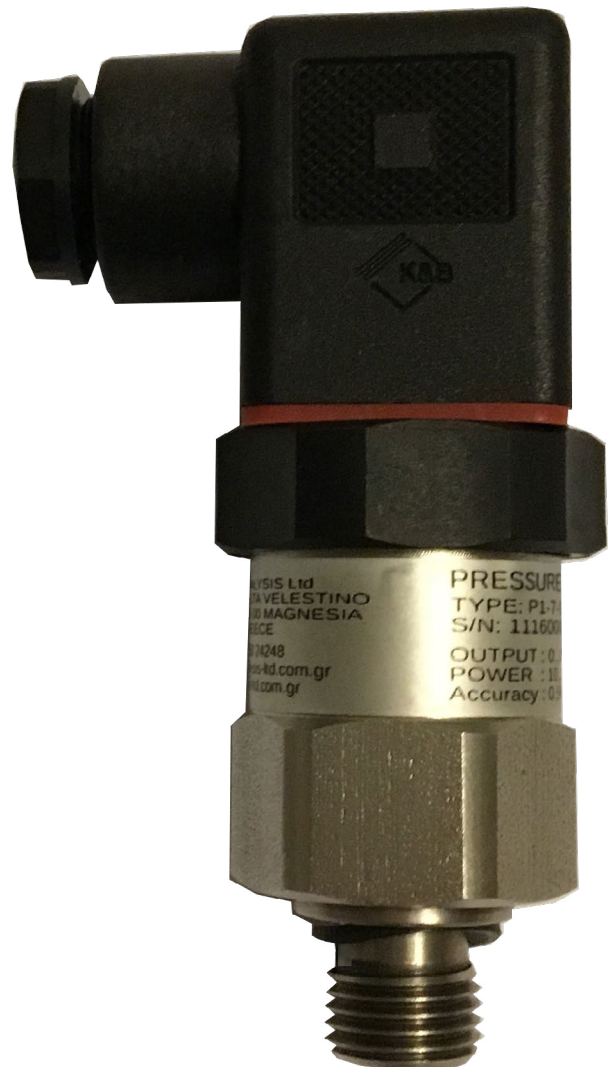
Version: 1.19-02-18

APPLICATIONS

Marine and Industrial applications
 Cooling water and refrigeration plants
 Oil lubrication and hydraulic oil
 Exhaust gas from diesel engines
 Pneumatic systems
 Pumps

FEATURES

Reliable and accurate pressure measurement
 Measuring ranges from 0 to 0.5bar, to 0 to 700bar
 Accuracy (non-linearity) $\leq \pm 0.5$ % of span
 Working temperature -40 to 80C
 Supply voltage 10 to 30VDC
 Available outputs 4 to 20mA, 0 to 10V, 0 to 5V,
 1 to 5V, others on request
 Process Connection G1/4" or G1/2" ,others on request
 On request two pressure points test certificate
 Stainless steel material AISI304 or AISI316





ELECTRICAL SPECIFICATIONS

Supply voltage	10 to 30 VDC	
Output	4...20 mA	(2 wires connection)
	0...10 VDC	(3 wires connection)
	0...5 VDC	(3 wires connection)
	1...5 VDC	(3 wires connection)

TEMPERATURE SPECIFICATIONS

Storage temperature	-40 to 80 C
Storage temperature	-40 to 80 C
Max temperature	105 C

PRESSURE RANGES

-0.5 to 0.8 bar	1.0% accuracy
0 to 0.5 bar	1.0% accuracy
0 to 0.7 bar	
0 to 1 bar	
0 to 2 bar	
0 to 3.5 bar	
0 to 7 bar	
0 to 10 bar	
0 to 20 bar	
0 to 35 bar	
0 to 70 bar	
0 to 100 bar	
0 to 200 bar	
0 to 350 bar	
0 to 700 bar	

OPERATION CONDITIONS

Shock Resistance	2-13.2Hz at ± 1mm and from 13.2-100Hz at 0.7g
Vibration Resistance	2-25Hz at ± 1mm and from 25-100Hz at 4.0g

ACCURACY SPECIFICATIONS

Accuracy (non-linearity)	≤ ± 0.5 % of span at 1.
Room Accuracy (non-linearity)	≤ ± 1 % of span
Temperature error every 10C	≤ ± 0.1 % of span
Hysteresis and repeatability	≤ ± 0.2 % of span
Signal Noise error	≤ ± 0.3 % of span
Temperature error -40 to 15C and 34 to 80C	≤ ± 2.5 % of span

1.Power supply: 24VDC, Temperature: 18 to 24C, Mount position: Vertical, Humidity: 45 to 75%

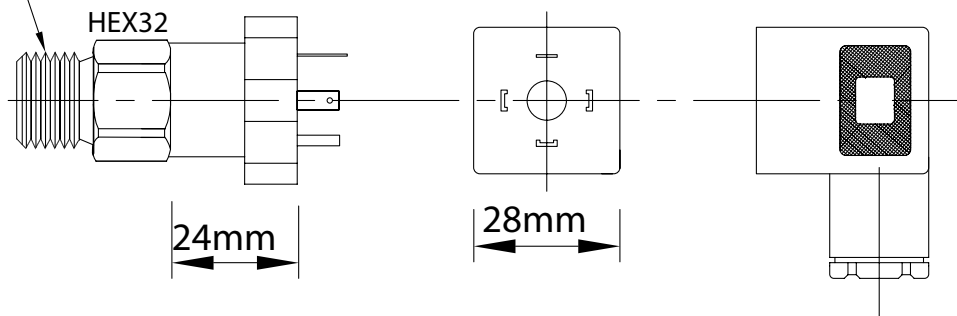
P1



ANALYSIS LTD

DIMENSIONS

PROCESS CONNECTION

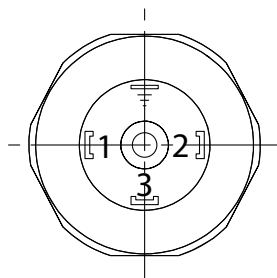


ELECTRICAL CONNECTIONS

mA OUTPUT:

1 → (+)

2 → (-)

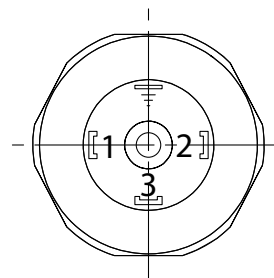


Volt OUTPUT:

1 → (+)

2 → (-)

3 → (Vout)



P1



ANALYSIS LTD

ORDER CODE FOR P1

PRESSURE RANGES

-0.5 to 0.8 bar	V0.50.8			
0 to 0.5 bar	0.5			
0 to 1 bar	1			
0 to 2 bar	2			
0 to 3.5 bar	3.5			
0 to 7 bar	7			
0 to 10 bar	10			
0 to 20 bar	20			
0 to 35 bar	35			
0 to 70 bar	70			
0 to 100 bar	100			
0 to 200 bar	200			
0 to 350 bar	350			
0 to 700 bar	700			
Other pressure ranges on request	XXX			

OUTPUT

4...20 mA (2 wires connection)		420A		
0...10 VDC (3 wires connection)		010V		
0...5 VDC (3 wires connection)		05V		
1...5 VDC (3 wires connection)		15V		
Other outputs on request		XXX		

ELECTRICAL CONNECTION

Plug Pg9 (EN175301-803-A)			Pg9	
---------------------------	--	--	-----	--

Case Material

AISI 304				4
AISI 316				6
Other material on request				XXX

PROCESS CONNECTION

G1/4"				G14
G1/2"				G12
Other connection on request				XXX

ORDERING EXAMPLE: P1-1-420A-Pg9-4-G14